

Segmentation of Liver Organ using Marker Watershed Transform Algorithm for CT Scan Images

Nisha Wankhade¹, Shraddha Sangewar¹, Dr. Prema Daigavane²

¹(Department of Information Technology, YCCE /RTM Nagpur University, India)

²(Department of IT, GHRCE /RTM Nagpur University, India)

Abstract: The Liver is a largest gland in the body. Distinct diseases affected on the liver. Liver diseases is one of the most serious health problem worldwide. For detecting the liver diseases the Segmentation Technique is essential. Segmentation is used for the classification of liver diseases. The liver diseases are focal or diffused is easily understood by the physician using segmentation. We use CT scan image for segmentation but the noise is present in the image. Therefore preprocessing is applied on the image for the removal of noise. In this paper, Watershed Transform segmentation Algorithm is used because it produce complete division of images in separate region even if contrast is poor. Therefore this method could be achieved 92.1% accuracy.

Keywords : Liver Diseases; Preprocessing; Segmentation; Watershed Transform Algorithm

I. Introduction

The introduction of the paper should explain the nature of the problem, previous work, purpose, and the contribution of the paper. The contents of each section may be provided to understand easily about the paper. (10) In the Human body Liver is a vital internal organ. It is a metabolic organ in the body and perform different functions ie produce a protein, cholesterol and bile acid. Liver's main job is to filter blood coming from the digestive tract, before passing it to the rest of the body. In metabolic function of the body, the circulatory system is used to circulate blood by the heart and carried out to the liver. Every minute 1-1.5 litres of blood is transported to the liver through portal veins. The hepatic artery brings oxygen-rich blood to the liver similarly the portal vein transports nutrient.[1-4]The portal veins are used to pass to the blood through the gastrointestinal tract and absorbed large amounts of nutrients. The primary factor of liver diseases are excessive consumption of drugs, poison and drinking too much alcohol. The liver affects different diseases like cirrhosis, hepatitis virus A,B,C , cancer etc. These diseases are affect on any age and no age limit. The main symptoms of these diseases are weakness, excessive weight loss or gain, pain in the upper right abdomen where the liver is present. Fig. 1 show the healthy liver that perform a normal functions[5].

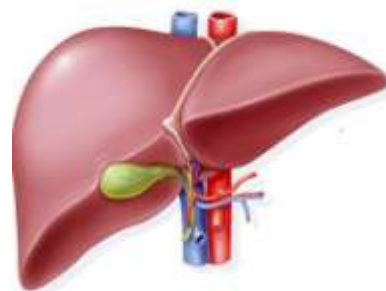


Fig. 1. Structure of Healthy liver

Liver segmentation from abdominal images is a process of subdividing a medical image such as magnetic resonance imaging (MRI), ultrasound scan imaging and computed tomography (CT) into parenchyma area of liver and non-parenchyma areas of liver. There are many methods of Liver segmentation. For every one of the medical image analysis tasks, image segmentation is a significant process, that is used for image comprehension, analysis and for basic higher-level. For surgical planning, early disease detection and 3D visualization, great segmentation provides important information and is very useful for clinicians and patients. To be able to solve the issues of medical image segmentation, already many advancements have been done in many practical methods in this field[6]. These generally include thresholding method, fuzzy cluster method, region-growing method, watershed segmentation and so on. To make the task of liver segmentation simpler and

less time consuming. This paper is formed as follows Section II presents preprocessing the, Section III explains the segmentation. Section IV explains the result.

II. Preprocessing

Image Preprocessing is an crucial and challenging factor in medical image processing. It is use to process the image so that segmentation and feature extraction algorithm work correctly. There are different ways for pre process the image like image re-sampling, manual correction, gray scale contrast enhancement and noise removal. Most of the abdominal CT images are noisy and the edges of objects are not cleared enough in the image. The preprocessing is use to enhance the manipulation of datasets and also improve the visual appearance of images. Generally medical images like MRI, CT etc. always contain a large amount of noise caused by equipment, operator performance, and the environment, which can lead to serious inaccuracies[7-10]. So that filtering method is useful to improving the visual appearance and for removal of noise it gives more accurate values. Before applying filter, image sharpened is use to enhance quality of edges without adding new details and improve eye visualization[11-12].

A. Wiener Filter

The noise is removed using Wiener filter. Wiener filter preserves edges as well as high frequency areas. It takes 3 inputs: i).Image to be filtered, ii).Point Spread Function (PSF) with which noise is distributed and iii). Noise-to-Signal Ratio (NSR). This is basically a restoring method, which performs an optimal trade off between inverse filtering and noise smoothing [8]. Wiener filter is the MSE-optimal stationary linear filter i.e. it minimizes the mean square error (MSE) which is given as the difference between some desired response and the actual filter output. This filter is not suitable for non-stationary inputs. It perform image filtering adaptively by computing local image variance. It performs a little smoothing for large local variance. Wiener filter requires more time than linear filtering and works best provided that the noise is constant power additive noise such as Gaussian noise. The restoration process using this filter incorporates both the degradation function and statistical characteristic of noise.

$$e^2 = E[(f - \hat{f})^2]$$

$$\hat{f}(u, v) = \left[\frac{H(u, v) S_f(u, v)}{S_f(u, v) |H(u, v)|^2 + S_n(u, v)} \right] G(u, v)$$

$$\hat{f}(u, v) = \left[\frac{H(u, v)}{|H(u, v)|^2 + S_n(u, v) / S_f(u, v)} \right] G(u, v)$$

$$\hat{f}(u, v) = \left[\frac{1}{H(u, v) |H(u, v)|^2 + S_n(u, v) / S_f(u, v)} \right] G(u, v)$$

$$S_n(u, v) = |N(u, v)|^2 = \text{power spectrum of the noise}$$

$$S_f(u, v) = |F(u, v)|^2 = \text{power spectrum of the undegraded image}$$

$$\hat{f}(u, v) = \left[\frac{1}{H(u, v) |H(u, v)| + K} \right] G(u, v)$$

$$\hat{f}(u, v) = \left[\frac{1}{H(u, v) |H(u, v)|^2 + S_n(u, v) / S_f(u, v)} \right] G(u, v)$$

III. Segmentation

Image segmentation is a process for partition of an image into non-overlap regions, which is an important step in the image processing area and is a base for the analysis and identification in image processing. Image segmentation is a principal process for most of the medical image analysis tasks, which is basic for higher-level image comprehension and analysis. Clinicians and patients will derive benefit from good segmentation since it provides important information for early disease detection, surgical planning, and 3D visualization. In order to solve the problems of medical image segmentation, there has been advancement in many practical methods in this field. Image segmentation is the process of dividing image into regions according to its characteristic such as color and objects present in the images. Segmentation is in the form of images that are easier to understand, more meaningful, and easier to analyze. In order to locate objects and boundaries in images feature extraction of optical density, object

shape, and texture, surface visualization, compression image segmentation and image registration is used. Correct segmented results are very useful for the analysis, predication and diagnoses.

A. Watershed Transform

The Watershed is a powerful region based image segmentation algorithm. Watershed was introduced by Beucher and Lantuejoul, Since its introduction it has been widely studied and achieved encouraging results in image segmentation . Its basic idea is to consider image as a topography topology of geodesy Fig. 2, The pixel gray value of each point of image stands for the every local minimum value, altitude of that point, and its impact region are known as the collection basin and the borders of the basin form the watershed[11]. Intuitively, the watershed of a function is composed of the various locations from which a water droplet could flow towards different minima. The immersion process is simulated from the heights of local minima. The water level rises in each basin and when two basins meet, a watershed is created between them.

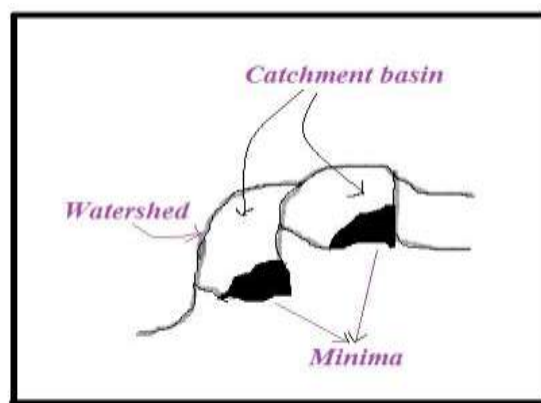


Fig. 2. Watershed Segmentation simplified in 2 dimension

IV. Result

The procedure took for watershed segmentation is described details as follows[9]:

Step 1: Convert image to grayscale and enhance the image contrast.



Fig. 2. Original Image

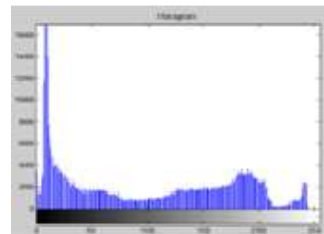


Fig. 3. Histogram of image

Step 2: Use the Gradient Magnitude as the Segmentation Function.

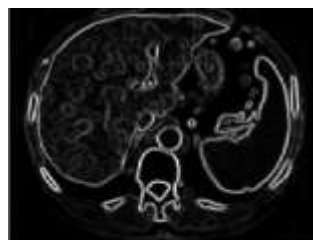


Fig. 4. Gradient Magnitude

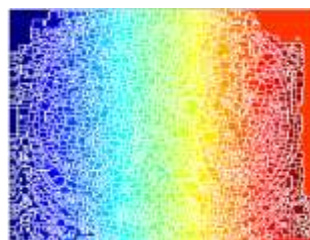


Fig. 5. Watershed Transform

Step 3: Marking the Foreground Objects.

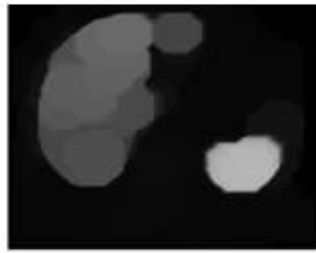


Fig. 6. After Opening

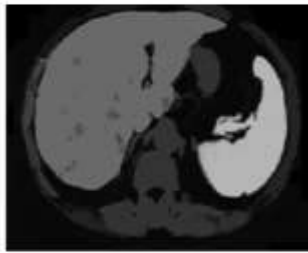


Fig. 7. Opening by reconstruction

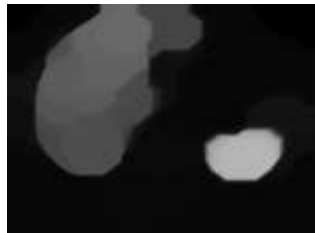


Fig. 8. After Opening-closing

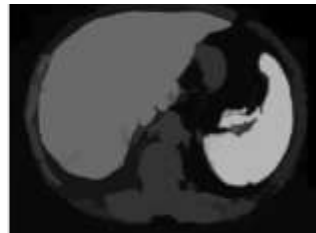


Fig. 9. Opening-closing by reconstruction

Step 4: Compute Background Markers.



Fig. 10. Regional maxima of

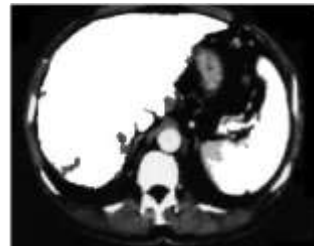


Fig. 11. maxima superimpose

Opening –closing reconstruction on original image

Step 5: Modify the Segmentation Function.

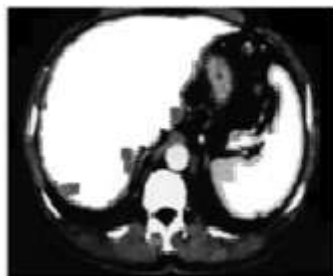


Fig. 12. Modified regional maxima.



Fig. 13. Thresholded opening- closing by superimposed on original image.

Step 6: Compute the Watershed Transform of the Segmentation Function.



Fig. 14. Markers and object boundaries

Step 7: Visualize the Result.



Fig. 15. Colored watershed Label matrix.

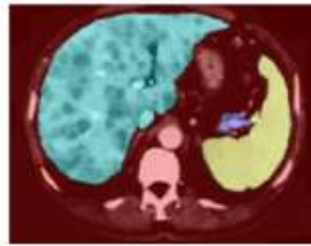


Fig. 16. Lrgb superimposed transparency on original Image

V. Conclusion

In this paper, Image Segmentation method is important step in any image processing method can be proceeded. The CT scan image has noise. Preprocessing is a step to clear the image noise before applying the watershed segmentation and for this Weiner filter is used which gives good result as compared to other filters. This segmentation gives region of interest, minimum probability to identify the background and the affected region in CT scan images. It also used to separate the touching objects in the images. This method avoid the over segmentation and identification of main edge of the images. The proposed method gives 92.1% accurate result as comparing with other used techniques.

References

- [1] Suhuai Luo, Jesse S. Jin, Stephan K. Chalup, Guoyu Qian, "A Liver Segmentation Algorithm Based on Wavelets and Machine Learning" *The University of Newcastle, Australia* 978-0-7695-3645-3/09 \$25.00 © 2009 IEEE DOI 10.1109/CINC.2009.225.
- [2] Nasrul Humaimi Mahmood, Noraishikin Zulkarnain and Nor Saradatul Akmar Zulkifli "Ultrasound Liver Image Enhancement Using Watershed Segmentation Method" *International Journal of Engineering Research and Applications (IJERA)* ISSN: 2248-9622 Vol. 2, Issue 3, May-Jun 2012
- [3] Niket Amoda1, Ramesh K Kulkarni2 "Image Segmentation and Detection using Watershed Transform and Region Based Image Retrieval" *International Journal of Emerging Trends & Technology in Computer Science (IJETCS)* ISSN 2278-6856 Volume 2, Issue 2, March – April 2013
- [4] Gunasundari S , Janakiraman S, "A Study of Textural Analysis Methods for the Diagnosis of Liver Diseases from Abdominal Computed Tomography", *International Journal of Computer Applications* (0975 – 8887) Volume 74– No.11, July 2013.
- [5] Yen-Wei Chen, IEEE Member, Masaki Kaibori, Tsukasa Shindo, Kousuke Miyawaki, Tsukasa Shindo, Amir H. Foruzan, Tomoko Tateyama, Xian- Hua Han, Kosuke Matsui, Takumi Tsuda, A-Hon Kwon, "Computer-Aided Liver Surgical Planning System Using CT Volumes", *35th Annual International Conference of the IEEE EMBS Osaka, Japan*, 3 - 7 July, 2013.
- [6] Akanksha Sharma, Parminder Kaur, "Optimized Liver Tumor Detection and Segmentation Using Neural Network", *International Journal of Recent Technology and Engineering (IJRTE)* ISSN: 2277-3878, Volume-2, Issue-5, November 2013.
- [7] Smriti Sahu, Maheedhar Dubey, Mohammad Imroze Khan, Jitendra Kumar "Comparative Evaluation of Filters for Liver Ultrasound Image Enhancement", *International Journal of Emerging Trends and Technology in Computer Science (IJETCS)* ISSN 2278-6856 Volume 2, Issue 1, January – February 2013.
- [8] Belgherbi. Aicha, Bessaid. Abdelhafid " Morphological Segmentation of the Spleen From Abdominal CT Images" *I.J. Image, Graphics and Signal Processing*, 2014, 456-62 DOI: 10.5815/ijgsp.2012.04.08
- [9] Suhuai Luo1, Xuechen Li1, Jiaming Li2 "Review on the Methods of Automatic Liver Segmentation from Abdominal Images", *Journal of Computer and Communications*, 2014, 2, 1-7 Published Online January 2014 *The University of Newcastle, Australia; 2The CSIRO Computational Informatics, Australia.*
- [10] Kanitkar, Sayali Satish, N. D. Thombare, and S. S. Lokhande. "Detection of lung cancer using marker-controlled watershed transform." *Pervasive Computing (ICPC)*, 2015 *International Conference on. IEEE*, 2015.
- [11] Anisha P R, Kishor Kumar Reddy C, Narasimha Prasad L V., "A Pragmatic approach for Detecting Liver Cancer using Image Processing and Data Mining Techniques", *Space (Spacecraft prelaunch automatic checkout equipment) -2015, Dept of ECE, K L University.*
- [12] Ina Singh "A Study of Effective Segmentation Techniques for Liver Segmentation", *International Journal of Advanced Research in Computer Engineering & Technology (IJARCET)* Volume 4 Issue 4, April 2015.